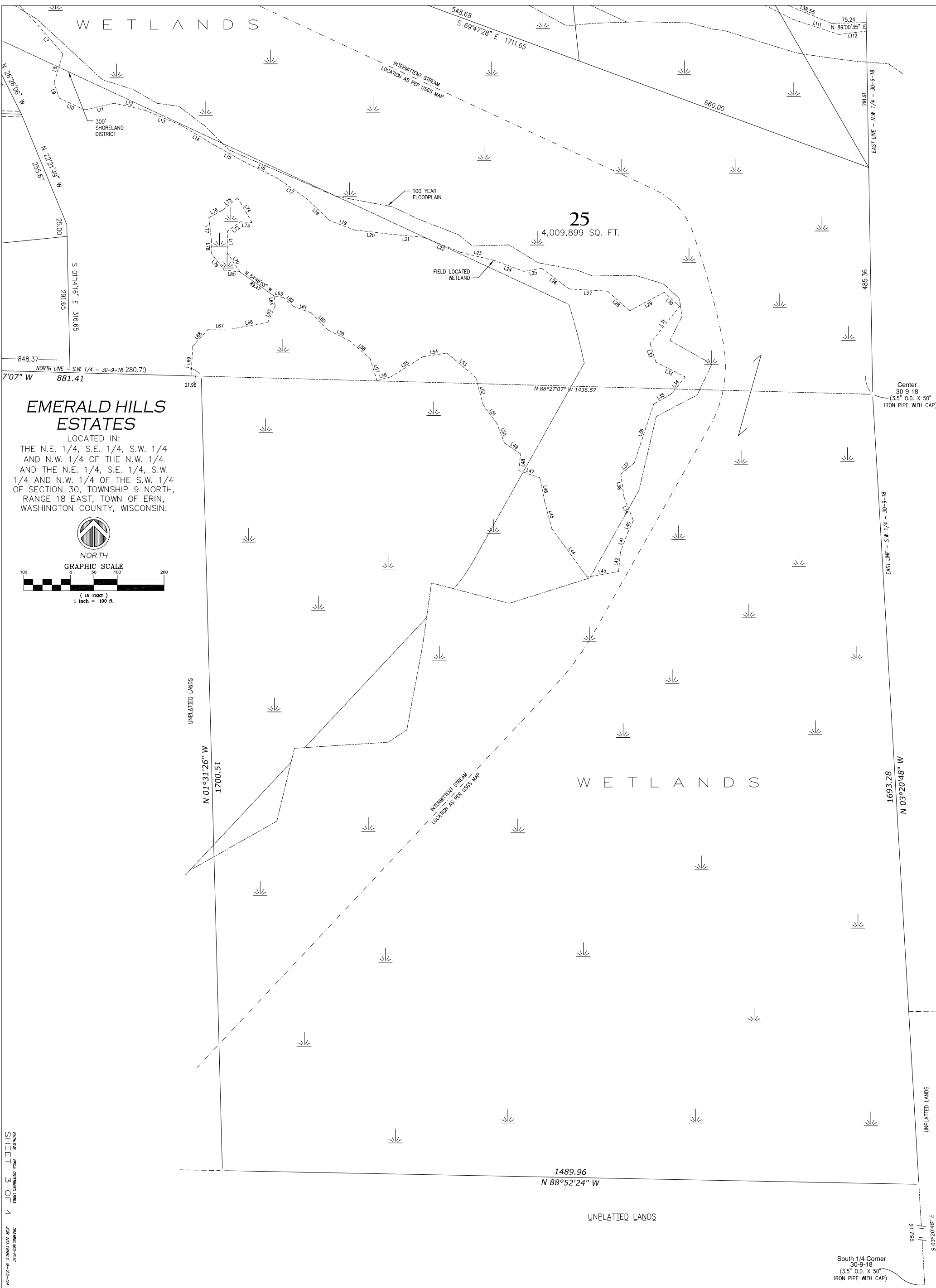


WETLANDS



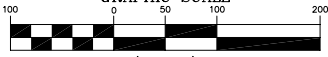
### EMERALD HILLS ESTATES

LOCATED IN:  
 THE N.E. 1/4, S.E. 1/4, S.W. 1/4  
 AND N.W. 1/4 OF THE N.W. 1/4  
 AND THE N.E. 1/4, S.E. 1/4, S.W.  
 1/4 AND N.W. 1/4 OF THE S.W. 1/4  
 OF SECTION 30, TOWNSHIP 9 NORTH,  
 RANGE 18 EAST, TOWN OF ERIN,  
 WASHINGTON COUNTY, WISCONSIN.



NORTH

GRAPHIC SCALE



( IN FEET )  
1 inch = 100 ft.