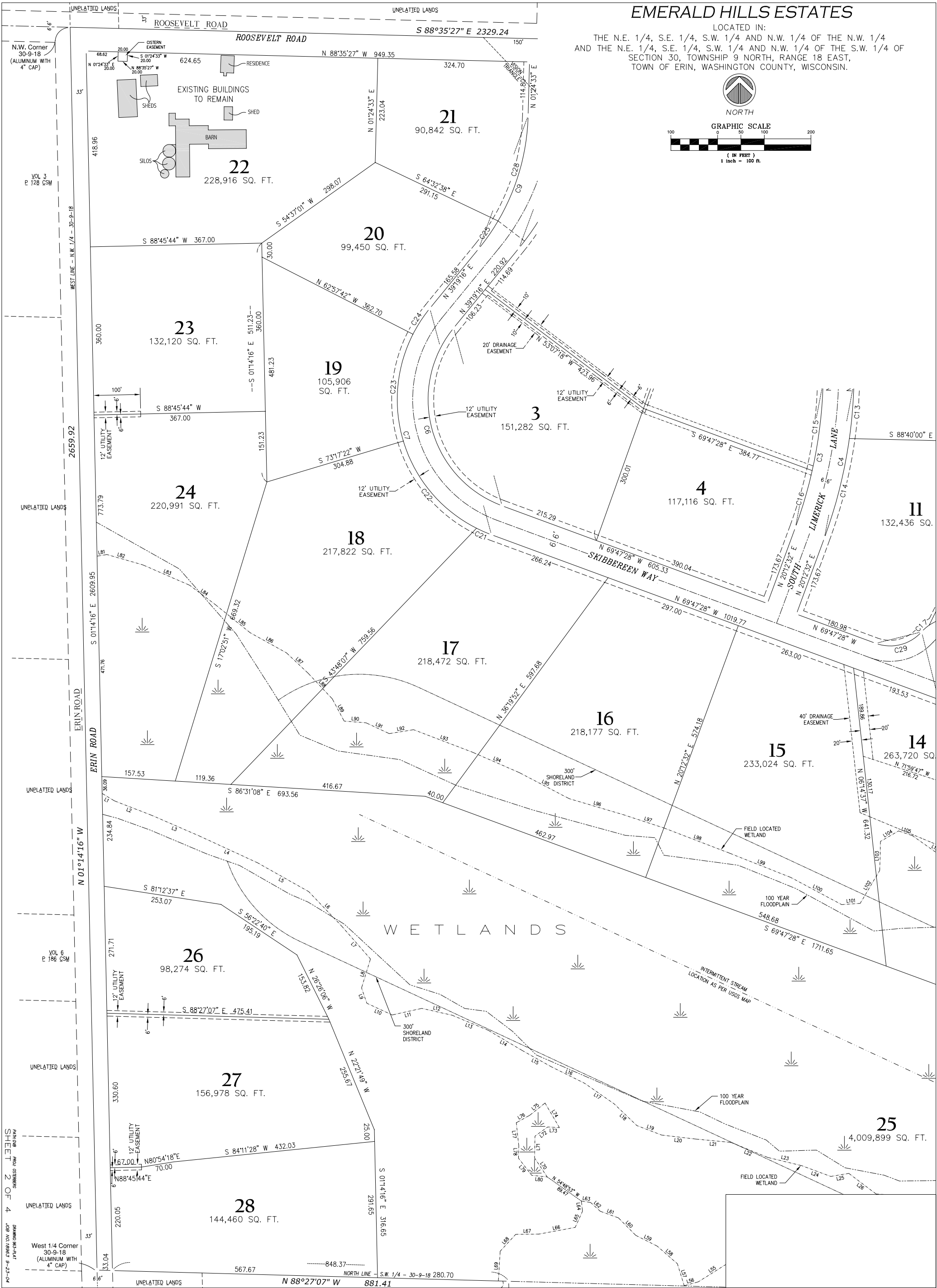
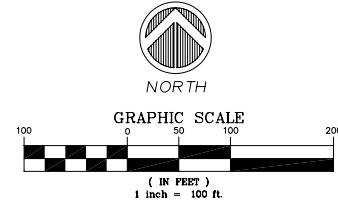


EMERALD HILLS ESTATES

LOCATED IN:
THE N.E. 1/4, S.E. 1/4, S.W. 1/4 AND N.W. 1/4 OF THE N.W. 1/4
AND THE N.E. 1/4, S.E. 1/4, S.W. 1/4 AND N.W. 1/4 OF THE S.W. 1/4 OF
SECTION 30, TOWNSHIP 9 NORTH, RANGE 18 EAST,
TOWN OF ERIN, WASHINGTON COUNTY, WISCONSIN.



PATRICK
SHEET 2 OF 4
WEST 1/4 CORNER
30-9-18
(ALUMINUM WITH
4" CAP)