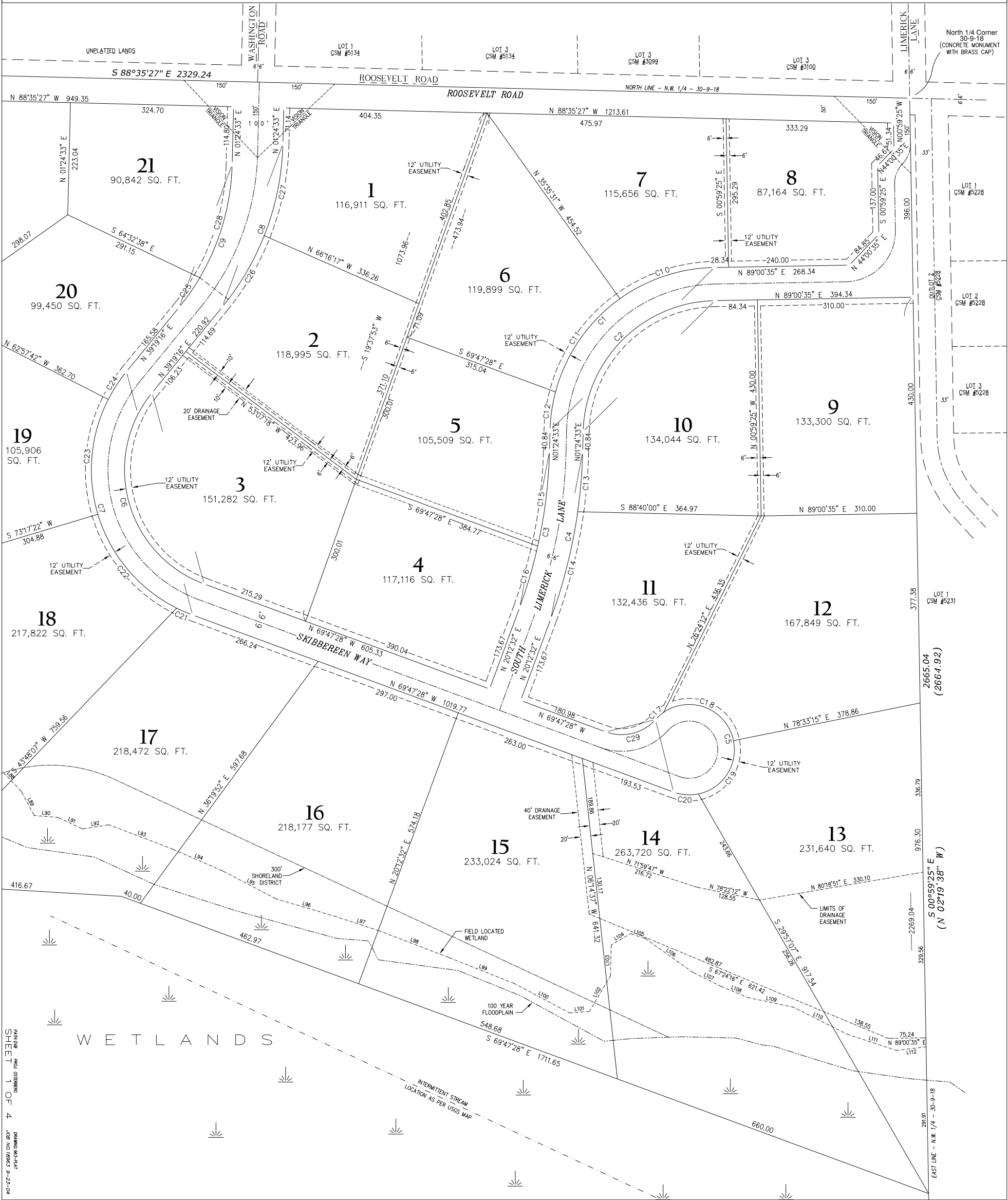
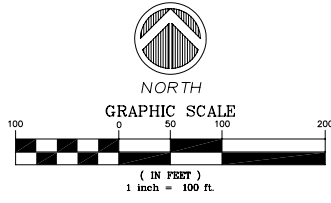


EMERALD HILLS ESTATES

LOCATED IN:
THE N.E. 1/4, S.E. 1/4, S.W. 1/4 AND N.W. 1/4 OF THE N.W. 1/4
AND THE N.E. 1/4, S.E. 1/4, S.W. 1/4 AND N.W. 1/4 OF THE S.W. 1/4 OF
SECTION 30, TOWNSHIP 9 NORTH, RANGE 18 EAST,
TOWN OF ERIN, WASHINGTON COUNTY, WISCONSIN.



PARTIAL
SHEET
1 OF 4
DATE: 08-23-04

North 1/4 Corner
30-9-18
(CONCRETE MONUMENT
WITH BRASS CAP)

LOT 1
CSM #5128

LOT 2
CSM #5228

LOT 3
CSM #5228

LOT 1
CSM #5231

2665.04
(2664.92)

S 00°59'25" E
(N 02°19'38" W)

EAST LINE - N.W. 1/4 - 30-9-18
291.91

WETLANDS

INTERMITTENT STREAM
LOCATION AS PER USGS MAP

100 YEAR
FLOODPLAIN

FIELD LOCATED
WETLAND

300'
SHORELAND
DISTRICT

LIMITS OF
DRAINAGE
EASEMENT

12' UTILITY
EASEMENT

40' DRAINAGE
EASEMENT

12' UTILITY
EASEMENT

12' UTILITY
EASEMENT

20' DRAINAGE
EASEMENT

12' UTILITY
EASEMENT

12' UTILITY
EASEMENT